

Ferritin Heavy Chain Antibody
Rabbit mAb
Catalog # AP91514**Specification****Ferritin Heavy Chain Antibody - Product Information**

Application	WB, IHC
Primary Accession	P02794
Clonality	Monoclonal
Other Names	
Apoferitin; F HC; Ferritin H subunit; FHC; FRIH; FTH; FTH1; FTHL6; N-terminally processed; PIG15; PLIF;	
Isotype	Rabbit IgG
Host	Rabbit
Calculated MW	21226 Da

Ferritin Heavy Chain Antibody - Additional Information

Dilution	WB~~1:1000 IHC~~1:100~500
Purification	Affinity-chromatography
Immunogen	A synthesized peptide derived from human Ferritin Heavy Chain
Description	Stores iron in a soluble, non-toxic, readily available form. Important for iron homeostasis. Has ferroxidase activity. Iron is taken up in the ferrous form and deposited as ferric hydroxides after oxidation. Also plays a role in delivery of iron to cells. Mediates iron uptake in capsule cells of the developing kidney (By similarity).
Storage Condition and Buffer	Rabbit IgG in phosphate buffered saline , pH 7.4, 150mM NaCl, 0.02% sodium azide and 50% glycerol. Store at +4°C short term. Store at -20°C long term. Avoid freeze / thaw cycle.

Ferritin Heavy Chain Antibody - Protein Information**Name** FTH1**Synonyms** FTH, FTHL6**Function**

Stores iron in a soluble, non-toxic, readily available form. Important for iron homeostasis. Has ferroxidase activity (PubMed:9003196). Iron is taken up in the ferrous form and deposited as ferric

hydroxides after oxidation (PubMed:9003196). Also plays a role in delivery of iron to cells (By similarity). Mediates iron uptake in capsule cells of the developing kidney (By similarity). Delivery to lysosomes is mediated by the cargo receptor NCOA4 for autophagic degradation and release of iron (PubMed:24695223, PubMed:26436293).

Cellular Location

Cytoplasm. Lysosome. Cytoplasmic vesicle, autophagosome

Tissue Location

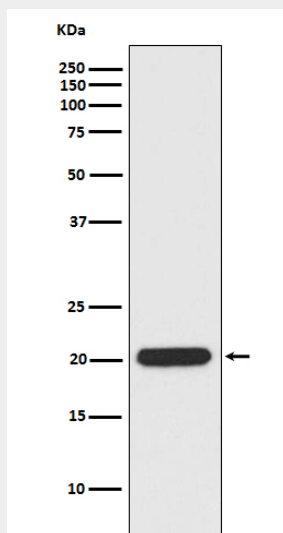
Expressed in the liver.

Ferritin Heavy Chain Antibody - Protocols

Provided below are standard protocols that you may find useful for product applications.

- [Western Blot](#)
- [Blocking Peptides](#)
- [Dot Blot](#)
- [Immunohistochemistry](#)
- [Immunofluorescence](#)
- [Immunoprecipitation](#)
- [Flow Cytometry](#)
- [Cell Culture](#)

Ferritin Heavy Chain Antibody - Images



Western blot analysis of Ferritin Heavy Chain expression in HeLa cell lysate.